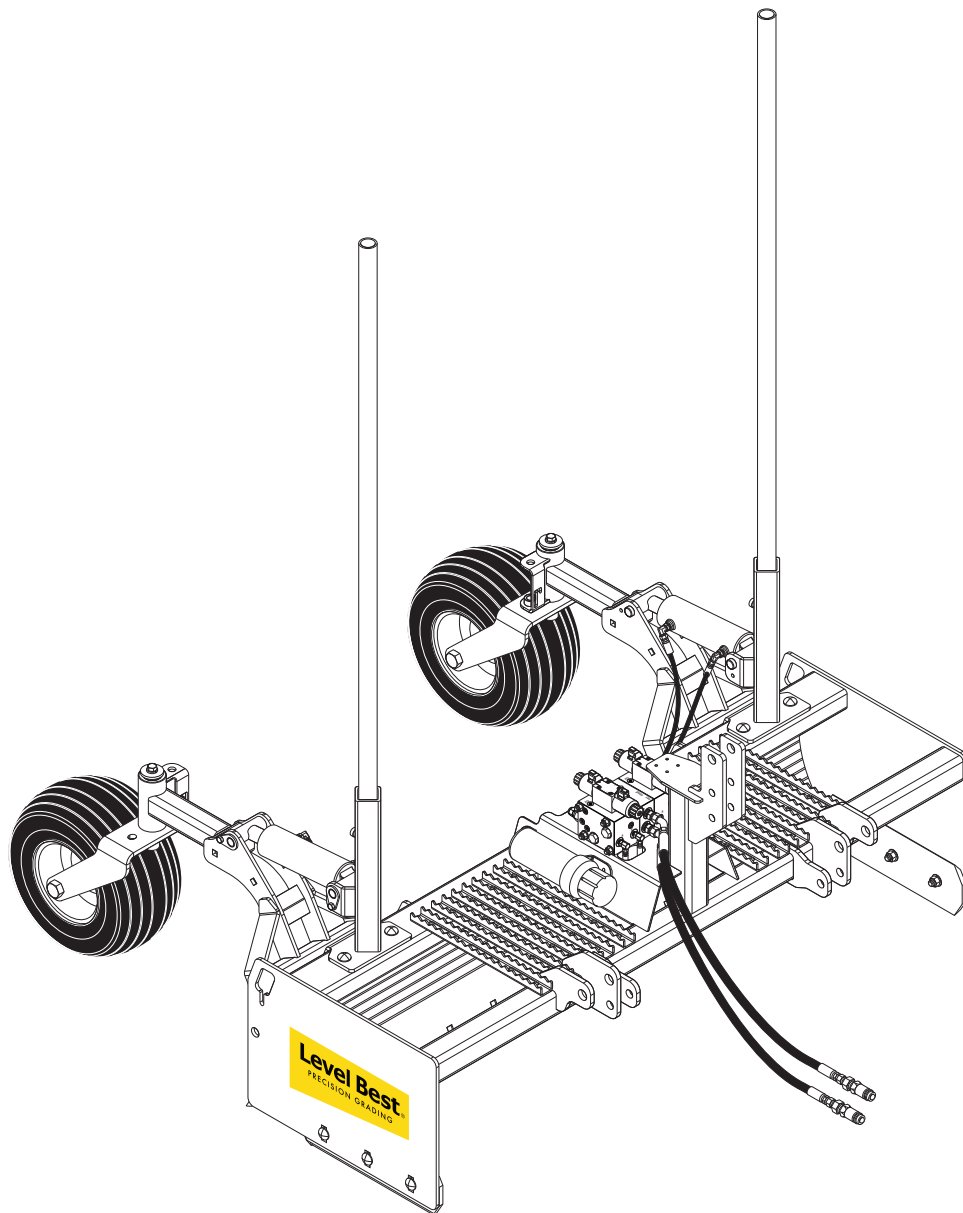


# PARTS MANUAL

## TD - SERIES DOUBLE TRACTOR BOX



ATI Corporation  
New Holland, PA 17557  
Phone (717) 354-8721 • FAX (717) 354-2162  
**1-800-342-0905**  
[www.level-best.com](http://www.level-best.com)

COPYRIGHT 2020 by  
**ATI Corporation**  
250 Earland Drive  
New Holland, PA 17557 U.S.A.

## **DISCLAIMER**

THE INFORMATION IN THIS MANUAL IS PROVIDED TO PROMOTE THE SAFE USE OF, AND ASSIST THE OPERATOR IN ACHIEVING THE BEST PERFORMANCE FROM, LASER GRADING BOX DESCRIBED HEREIN, FOR THEIR INTENDED APPLICATIONS.

## **USING THIS DOCUMENT**

This document is expected to be used as an electronic pdf document as well as a printed document. Various software can be used to view the document, including [Adobe® Acrobat Reader DC](#). Other pdf viewers are available.

As an electronic document, various links are included to help you navigate the document and find the applicable information. Links may be cross references within the document or an external link to an Internet page. Links shown in blue, such as the link to the Acrobat Reader DC software in the preceding paragraph. For an Internet link to work, the device must be connected to the Internet in some way. Data charges may apply.

*NOTE: Most pdf viewer software provides a command for previous view. In Acrobat Reader, for instance, the previous view on the View/Page Navigation menu. Keyboard shortcuts are also available, such as Alt+Left Arrow and Alt+Right Arrow for Previous View and Next View, respectively.*

# Table of Contents

<b>SUBJECT</b>	<b>PAGE NO.</b>
Table of Contents .....	i
Warranty.....	ii
Serial Number Information.....	ii
Where To Get Parts and Service .....	ii
How To Order Parts .....	iii
Notes .....	iv
List Of Parts Illustrations .....	1



# Para-Level Grading Box PARTS LIST

ATI Corporation  
1-800-342-0905  
www.level-best.com

## WARRANTY

This Level-Best Grading System is designed and manufactured to high standards. ATI Corporation, therefore, guarantees this Level-Best product to be free from defect in workmanship and materials for three (3) years from purchase date. If the machine is to be used for rental purposes the warranty is limited to ninety (90) days.

Components supplied by outside vendors (e.g. cylinders, hydraulic valves and components, electronic modules, and machine control technology systems) are warranted separately by their respective manufacturers. The warranty periods of these components are generally one (1) year from date of purchase.

**Neither Level-Best nor hydraulic component manufacturers will cover normal wear or failure due to hydraulic oil contamination from the power source. ALWAYS start with clean oil and filters prior to installation and operation.**

Misuse, abuse, misapplication, and unauthorize alterations will void this warranty.

**All warranty work must be performed by an authorized Level-Best dealer and authorized by ATI Corporation. All Level-Best parts suspected of failure must be returned to ATI Corporation for warranty analysis prior to any credit being issued.**

## SERIAL NUMBER INFORMATION

It is very important that the correct serial number is provided when ordering parts. The serial number plate is located on the main frame. Please mark the model and serial number of your Laser Grading Box in the space provided below in case the plate on your Laser Grading Box gets lost or damaged.

**Model..... Serial Number .....**

**Dealer Name ..... Dealer Phone Number .....**

## WHERE TO GET PARTS AND SERVICE

When replacement parts and service are required, ATI Corporation recommends returning to the dealer from which the product or optional kit was purchased. By going to the dealer, you are dealing with people that understand and know ATI products. Our dealers have the experience servicing these machines and stock the most common parts required to keep your equipment in top working condition.

*NOTE: ATI Corporation reserves the right to discontinue models at any time, change specifications, and improve design without notice and without incurring obligation on goods previously purchased and to discontinue supplying any part listed, when the demand does not warrant production.*

# Para-Level Grading Box PARTS LIST



ATI Corporation  
1-800-342-0905  
www.level-best.com

## HOW TO ORDER PARTS

Parts lists contained in this book have been prepared to help you when ordering spare and/or replacement parts. Your order will be filled promptly and accurately when the following information is provided:

1. Model and serial number of the unit. (This specifically identifies the equipment you have and permits us to verify the part numbers in your order.)
2. The parts list page number and catalog number. Include catalog revision number, if applicable.
3. The **Item** number for each part. **Item** numbers on the parts list page correspond with the numbers shown on the illustration.
4. **Part Number** as it appears in the parts list. In most cases this will be a nine-digit number; for example: 315-005-000.
5. The **Description** for the part as it appears on the parts list page.

When a complete assembly is needed, use the assembly number given in the parts list. If no assembly number is given, order by main assembly title and list only the item numbers you want. For example: “Wheel Frame Assembly per 315-509-000, Items 2 through 8, inclusive”.

The part ordered may have a new part number, or the part may have been replaced by a newer design with a different part number. In these cases your acknowledgement, shipping papers and invoices will be written listing the current part number first; the old part number you referred to will follow the part description.

Our purpose in doing this is to tell you that the parts are fully interchangeable. This will avoid any unnecessary correspondence or delay in processing your order. We suggest that you add any new number to your parts lists for future use.



# Para-Level Grading Box PARTS LIST



ATI Corporation  
1-800-342-0905  
[www.level-best.com](http://www.level-best.com)

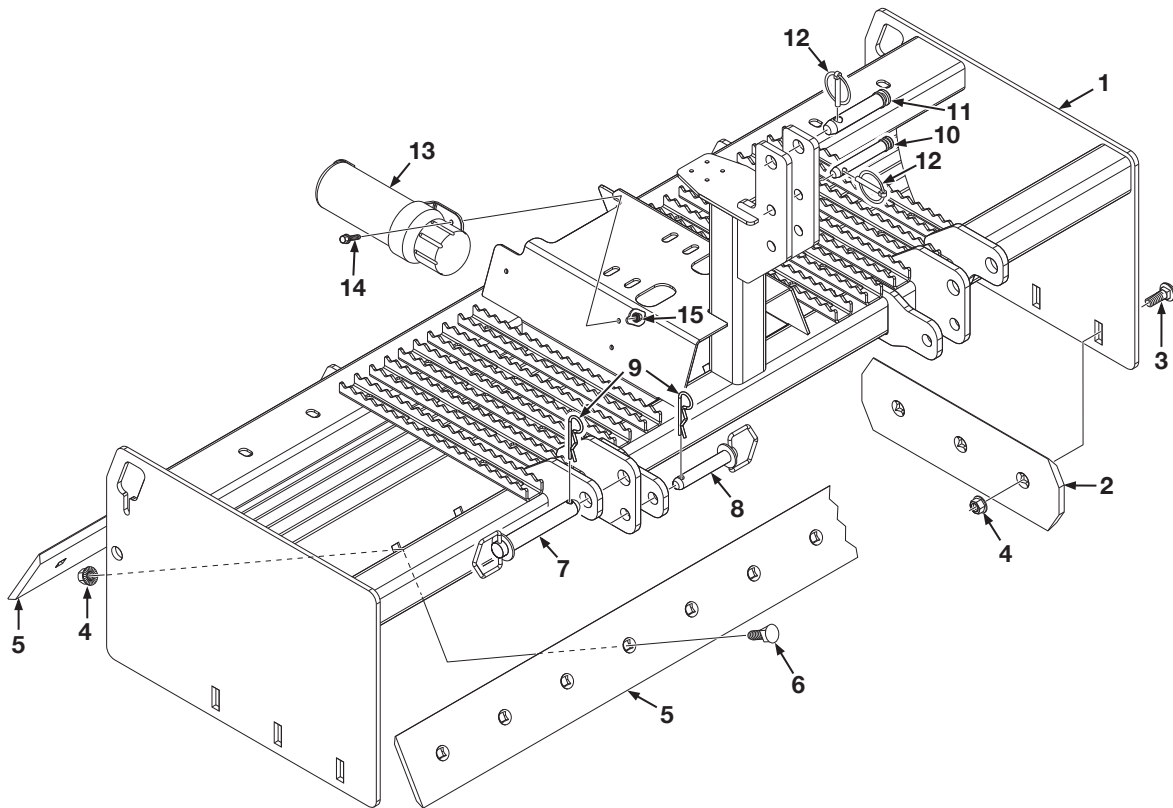
## List Of Parts Illustrations

Figure 1. Main Frame and Cutting Edges .....	2
Figure 2. Wheel Frame and Related Parts .....	4
Figure 3. Caster Fork and Single Wheel - Models TD72, TD84 & TD96 .....	6
Figure 4. Caster Fork and Dual Wheels - Models TD96 & TD108 .....	8
Figure 5. Hydraulic Valve Assembly, Cylinder Assembly and Related Parts .....	10
Figure 6. Hydraulic Valve Assembly .....	12
Figure 7. Laser Controls and Related Parts - Apache CB52/Spectra CB30 .....	14
Figure 8. Control Panel, Laser Receiver 360°, Cables - Apache/Spectra .....	16
Figure 9. Laser Controls and Related Parts - Leica iCON System .....	18
Figure 10. Control Panel, Laser Receiver 360°, Cables - Leica iCON System .....	20
Figure 11. Laser Controls and Related Parts - Topcon System Five Remote & LS-B4 .....	22
Figure 12. Drawbar Kit, with Wheel Locks (Optional) .....	24
Figure 13. Decals .....	26

# Para-Level Grading Box PARTS LIST

Figure 1. Main Frame and Cutting Edges

ATI Corporation  
1-800-342-0905  
www.level-best.com





# Para-Level Grading Box PARTS LIST



**Figure 1. Main Frame and Cutting Edges**

ATI Corporation  
 1-800-342-0905  
 www.level-best.com

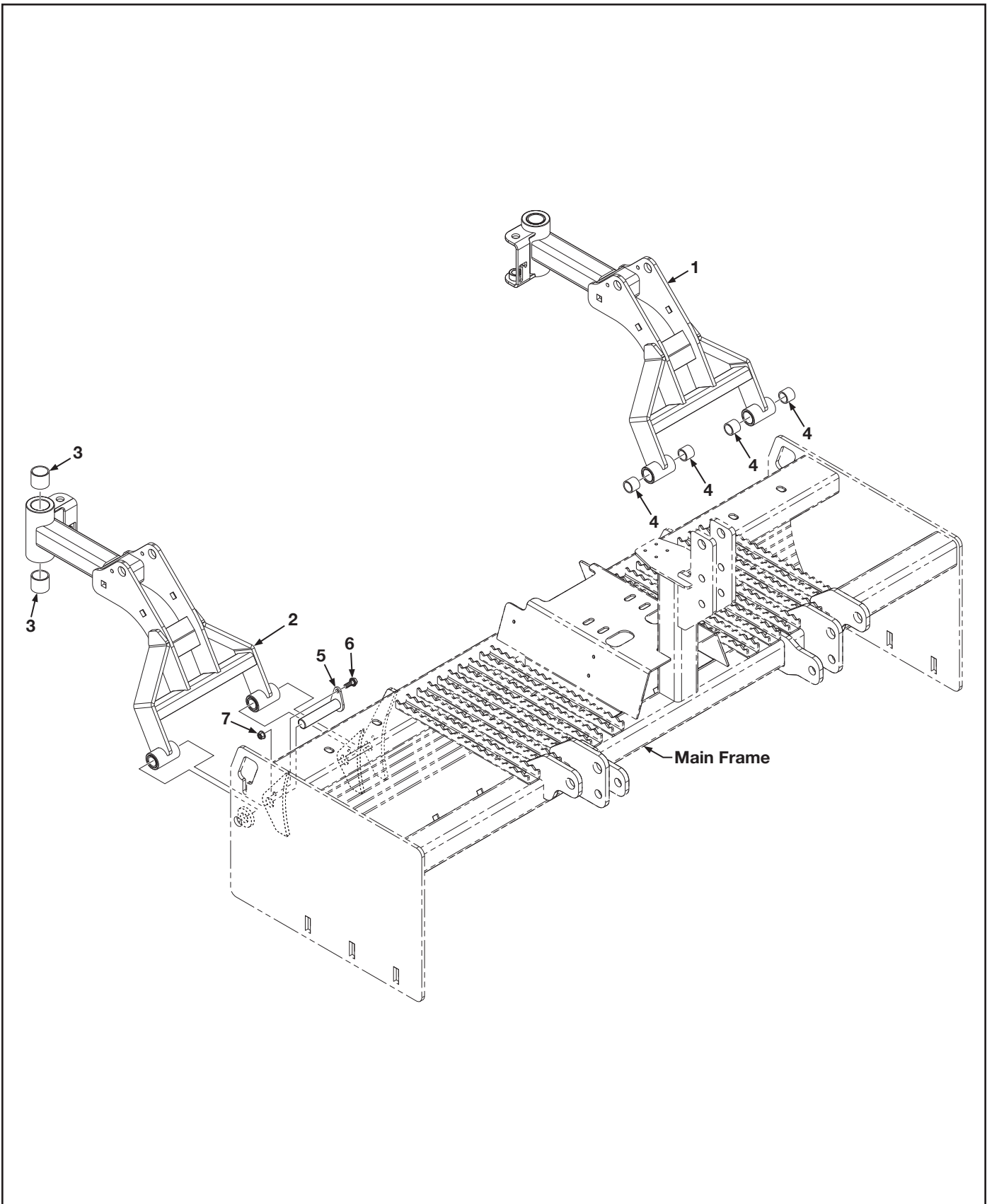
Item	Part No.	Qty	Description
1	315-117-000	1	Frame, Main, Tractor, 72"
	315-118-000	1	Frame, Main, Tractor, 84"
	315-119-000	1	Frame, Main, Tractor, 96"
	315-120-100	1	Frame, Main, Tractor, 108"
2	000-190-072	2	Edge, Cutting, End, DBF, 19-1/2" Long
3	000-150-256	6	Bolt, Carriage, 5/8"-11UNC x 1-1/2" Long
4	000-158-142	AR	Nut, Serrated Flange, 5/8"-11UNC
5	000-190-075	1	Edge, Cutting, DBF, 72" Long
	000-190-077	1	Edge, Cutting, DBF, 84" Long
	000-190-079	1	Edge, Cutting, DBF, 96" Long
	000-190-091	1	Edge, Cutting, DBF, 108" Long
6	000-150-258	AR	Bolt, Plow, 5/8"-11UNC x 1-3/4" Long
7	000-161-075	2	Pin, Hitch, 1-1/8" Dia. x 7" Long, Category II
8	000-161-076	2	Pin, Hitch, 7/8" Dia. x 5-1/4" Long, Category I
9	000-161-019	4	Pin, Hair, Cotter, 3/16" Dia. x 3-3/4" Long
10	000-161-081	1	Pin, Top Link, 3/4" Dia. x 5-1/2" Long, Category I
11	000-161-085	1	Pin, Top Link, 1" Dia. x 5-1/4" Long, Category II
12	000-161-028	2	Pin, Lynch, Locking, 7/16"
13	001-001-083	1	Canister, Operators Manual
14	000-150-078	3	Bolt, Serrated Flange, 5/16"-18UNC x 1" Long
15	000-158-064	3	Nut, Serrated Flange, 5/16"-18UNC

AR - As Required    NSS - Not Serviced Separately    ASN - After Serial No.    BSN - Before Serial No.    LP - Local Purchase

# Para-Level Grading Box PARTS LIST

Figure 2. Wheel Frame and Related Parts

ATI Corporation  
1-800-342-0905  
www.level-best.com



# Para-Level Grading Box PARTS LIST



**Figure 2. Wheel Frame and Related Parts**

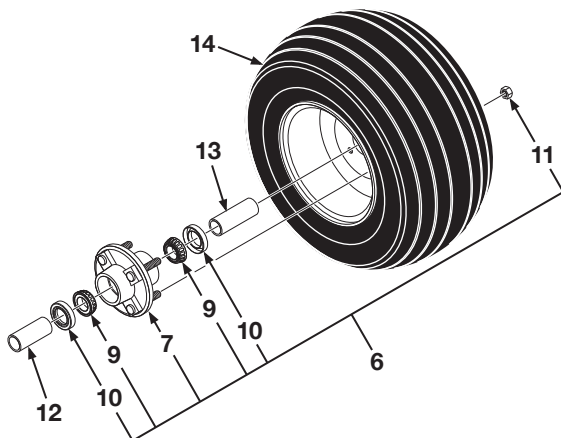
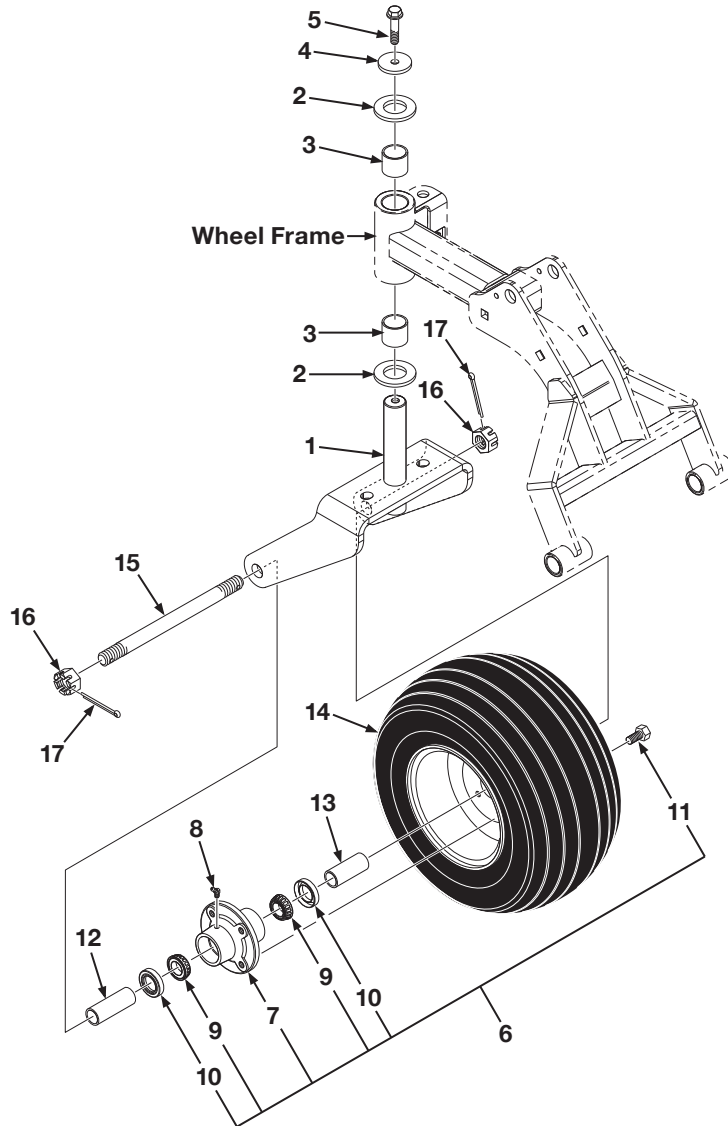
ATI Corporation  
 1-800-342-0905  
 www.level-best.com

Item	Part No.	Qty	Description
1	315-121-200	1	Frame, Wheel, Left, Includes Items 3 & 4
2	315-121-300	1	Frame, Wheel, Right, Includes Items 3 & 4
3	000-176-171	2	Bushing, Wheel Frame, 1-3/4" OD x 1-1/2" ID x 1-1/2" Long
4	000-176-174	4	Bushing, Wheel Frame, 1-1/4" OD x 1" ID x 1" Long
5	000-161-164	4	Pin, Pivot, Tabbed, 1" Dia. x 5" Long
6	000-150-078	3	Bolt, Serrated Flange, 5/16"-18UNC x 1" Long
7	000-158-064	3	Nut, Serrated Flange, 5/16"-18UNC

AR - As Required    NSS - Not Serviced Separately    ASN - After Serial No.    BSN - Before Serial No.    LP - Local Purchase

# Para-Level Grading Box PARTS LIST

**Figure 3. Caster Fork and Single Wheel  
- Models TD72, TD84 & TD96**



**Alternate Hub Assembly**

# Para-Level Grading Box PARTS LIST



**Figure 3. Caster Fork and Single Wheel -  
Models TD72, TD84 & TD96**

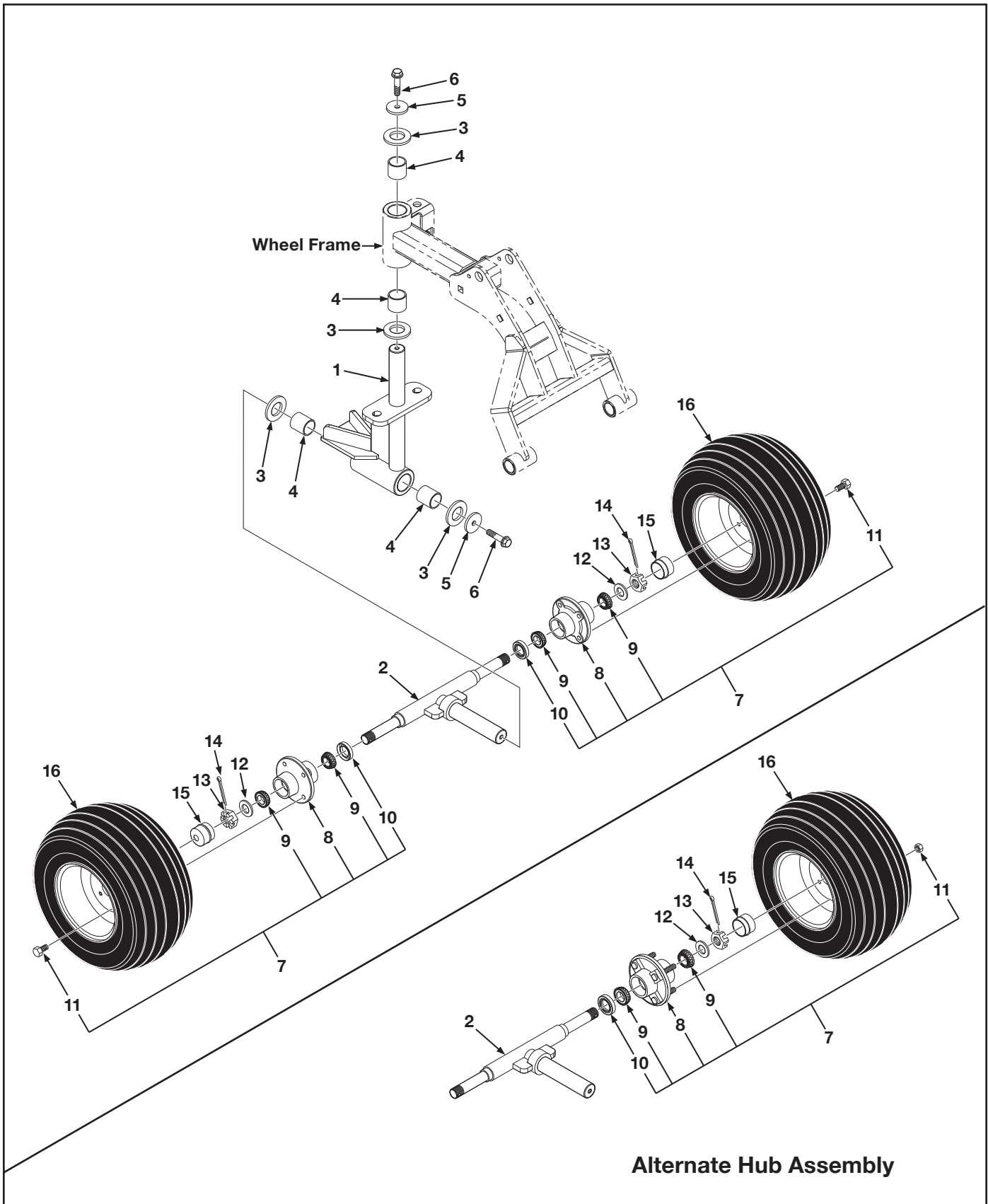
ATI Corporation  
1-800-342-0905  
www.level-best.com

Item	Part No.	Qty	Description
1	315-548-000	2	Fork, Caster
2	000-155-002	4	Bushing, Washer, 2-1/4" OD x 1-1/2" ID x 10 Gauge
3	000-176-171	4	Bushing, Wheel Frame, 1-3/4" OD x 1-1/2" ID x 1-1/2" Long
4	000-155-004	2	Washer, Flat, 2-1/4" OD x 17/32" ID x 1/4" Thick
5	000-150-375	2	Bolt, Serrated Flange, 1/2"-13UNC x 1-1/4" Long
6	001-001-069	2	Hub Assembly, Includes Items 7 thru 11
		2	Hub Assembly, Includes Items 7 thru 11 (Alternate Hub Assembly)
7	001-001-074	1	Hub, Wheel, With Outer Race, Includes Item 8
8	NSS	1	Fitting, Grease, 65°
9	000-176-184	2	Bearing, Roller, Tapered, 1" Dia. Bore
10	000-166-457	2	Seal, 1.983" OD x 1.219" ID x .475" Thick
11	000-150-218	4	Bolt, Lug, 1/2"-20UNF x 1-1/4" Long
	000-158-120	4	Nut, Lug, Hex, 1/2"-20UNF (Alternate Hub Assembly)
12	315-598-000	2	Spacer, Wheel Hub, 1-1/4" OD x 3-5/8" Long
13	315-597-000	2	Spacer, Wheel Hub, 1-1/4" OD x 2-7/8" Long
14	001-001-057	2	Wheel/Tire, Foam-Filled, 18.5/8.50-8
15	000-150-359	2	Shaft, Axle, Bolt, Hex Head, 1"-14UNF x 12" Long
16	000-158-193	2	Nut, Castle, Jam, 1"-14UNF
17	000-161-078	2	Pin, Cotter, 1/8" Dia. x 2" Long

AR - As Required    NSS - Not Serviced Separately    ASN - After Serial No.    BSN - Before Serial No.    LP - Local Purchase

# Para-Level Grading Box PARTS LIST

Figure 4. Caster Fork and Dual Wheels - Models TD96 & TD108



# Para-Level Grading Box PARTS LIST



**Figure 4. Caster Fork and Dual Wheels -  
Models TD96 & TD108**

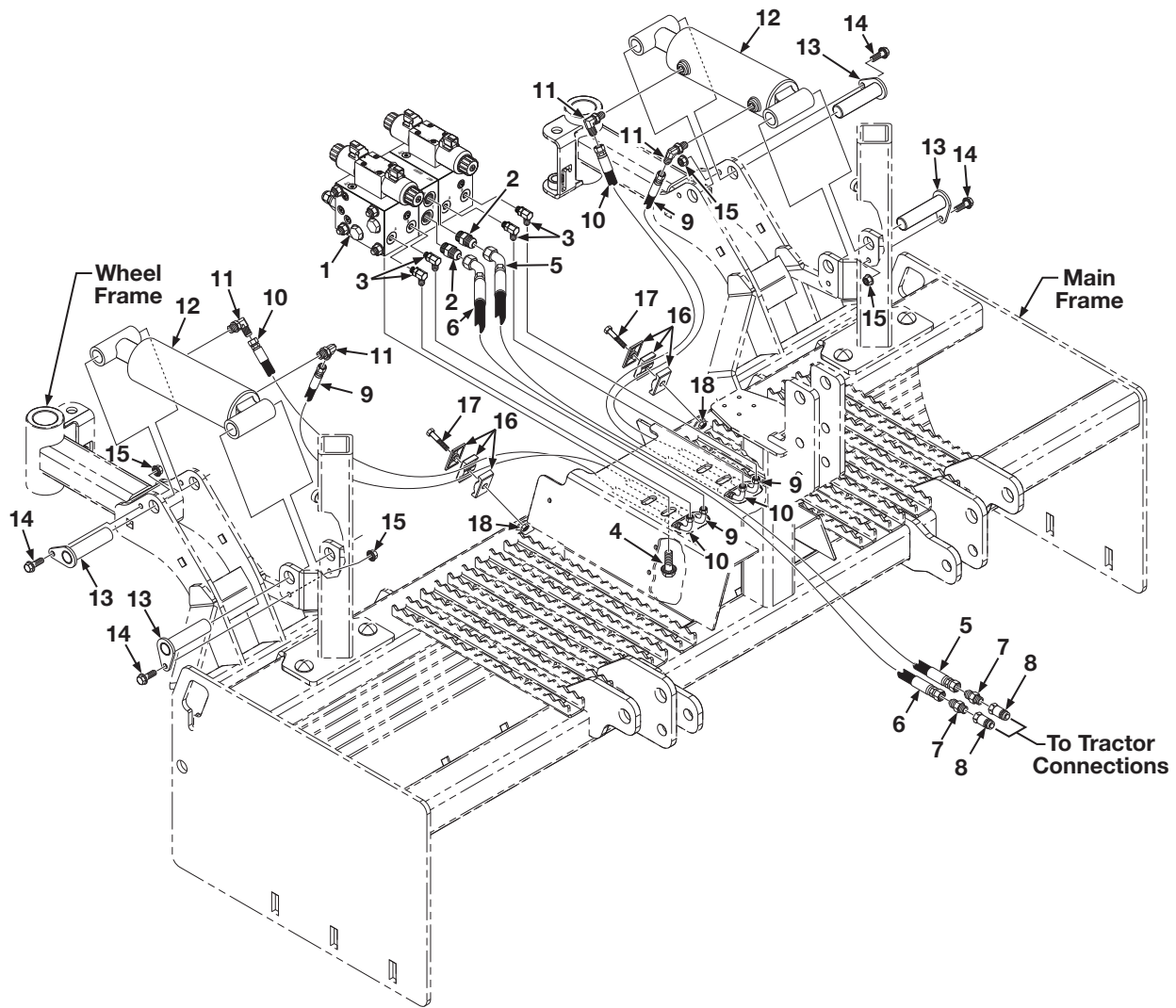
ATI Corporation  
1-800-342-0905  
www.level-best.com

Item	Part No.	Qty	Description
1	315-065-310	2	Caster
2	315-065-400	2	Axle, Dual
3	000-155-002	8	Bushing, Washer, 2-1/4" OD x 1-1/2" ID x 10 Gauge
4	000-176-171	8	Bushing, Wheel Frame, 1-3/4" OD x 1-1/2" ID x 1-1/2" Long
5	000-155-004	4	Washer, Flat, 2-1/4" OD x 17/32" ID x 1/4" Thick
6	000-150-375	4	Bolt, Serrated Flange, 1/2"-13UNC x 1-1/4" Long
7	001-001-069	4	Hub Assembly, Includes Items 8 thru 11
		4	Hub Assembly, Includes Items 8 thru 11 (Alternate Hub Assembly)
8	001-001-074	1	Hub, Wheel, With Outer Race
9	000-176-184	2	Bearing, Roller, Tapered, 1" Dia. Bore
10	000-166-457	2	Seal, 1.983" OD x 1.219" ID x .475" Thick
11	000-150-218	4	Bolt, Lug, 1/2"-20UNF x 1-1/4" Long
	000-158-120	4	Nut, Lug, Hex, 1/2"-20UNF (Alternate Hub Assembly)
12	000-155-003	4	Washer, Flat, 1-1/2" OD x 1" ID x 14 Gauge
13	000-158-193	4	Nut, Castle, 1"-14UNF
14	000-161-078	4	Pin, Cotter, 1/8" Dia. x 2" Long
15	001-001-084	4	Cap, Dust
16	001-001-057	4	Wheel/Tire, Foam-Filled, 18.5/8.50-8

AR - As Required    NSS - Not Serviced Separately    ASN - After Serial No.    BSN - Before Serial No.    LP - Local Purchase

# Para-Level Grading Box PARTS LIST

Figure 5. Hydraulic Valve Assembly, Cylinder Assembly and Related Parts





# Para-Level Grading Box PARTS LIST



**Figure 5. Hydraulic Valve Assembly, Cylinder Assembly and Related Parts**

ATI Corporation  
 1-800-342-0905  
 www.level-best.com

Item	Part No.	Qty	Description
1	000-166-715	1	Valve Assembly, Hydraulic Double, Includes Items 2 & 3, See Breakdown <a href="#">Figure 6</a>
2	000-166-170	4	Adapter, Straight, 8MJ x 8MB
3	000-166-225	4	Elbow, 90°, 6MJ x 6MB
4	000-150-396	4	Bolt, Serrated Flange, 1/2"-13UNC x 1" Long
5	000-166-616	1	Hose, 1/2" Dia. x 58" Long x 8FJX x 8FJX45, 5,000 PSI
6	000-166-616	1	Hose, 1/2" Dia. x 58" Long x 8FJX x 8FJX45, 5,000 PSI
7	000-166-168	2	Adapter, Straight, 8MJ x 8MP
8	000-166-210	2	Coupler, Quick Disconnect, Ag, Male, 1/2"
9	000-166-718	2	Hose, 3/8" Dia x 44" Long x 6FJX x 6FJX90L, 5,585 PSI, Model TD72
	000-166-682	2	Hose, 3/8" Dia x 50" Long x 6FJX x 6FJX90L, 5,585 PSI, Models TD84 & TD96
	000-166-719	2	Hose, 3/8" Dia x 56" Long x 6FJX x 6FJX90L, 5,585 PSI, Model TD108
10	000-166-718	2	Hose, 3/8" Dia x 44" Long x 6FJX x 6FJX90L, 5,585 PSI, Model TD72
	000-166-682	2	Hose, 3/8" Dia x 50" Long x 6FJX x 6FJX90L, 5,585 PSI, Models TD84 & TD96
	000-166-719	2	Hose, 3/8" Dia x 56" Long x 6FJX x 6FJX90L, 5,585 PSI, Model TD108
11	000-166-225	4	Elbow, 90°, 6MJ x 6MB
12	000-166-689	2	Cylinder, Hydraulic, 3" Bore x 6" Stroke
13	000-161-164	4	Pin, Pivot, Tabbed, 1" Dia. x 5" Long
14	000-150-078	4	Bolt, Serrated Flange, 5/16"-18UNC x 1" Long
15	000-158-064	4	Nut, Serrated Flange, 5/16"-18UNC
16	000-166-739	2	Clamp Assembly, Hoses
17	000-150-092	2	Bolt, Hex Head, 5/16"-18UNC x 2" Long
18	000-158-066	2	Nut, Hex, Nylon Lock, 5/16"-18UNC

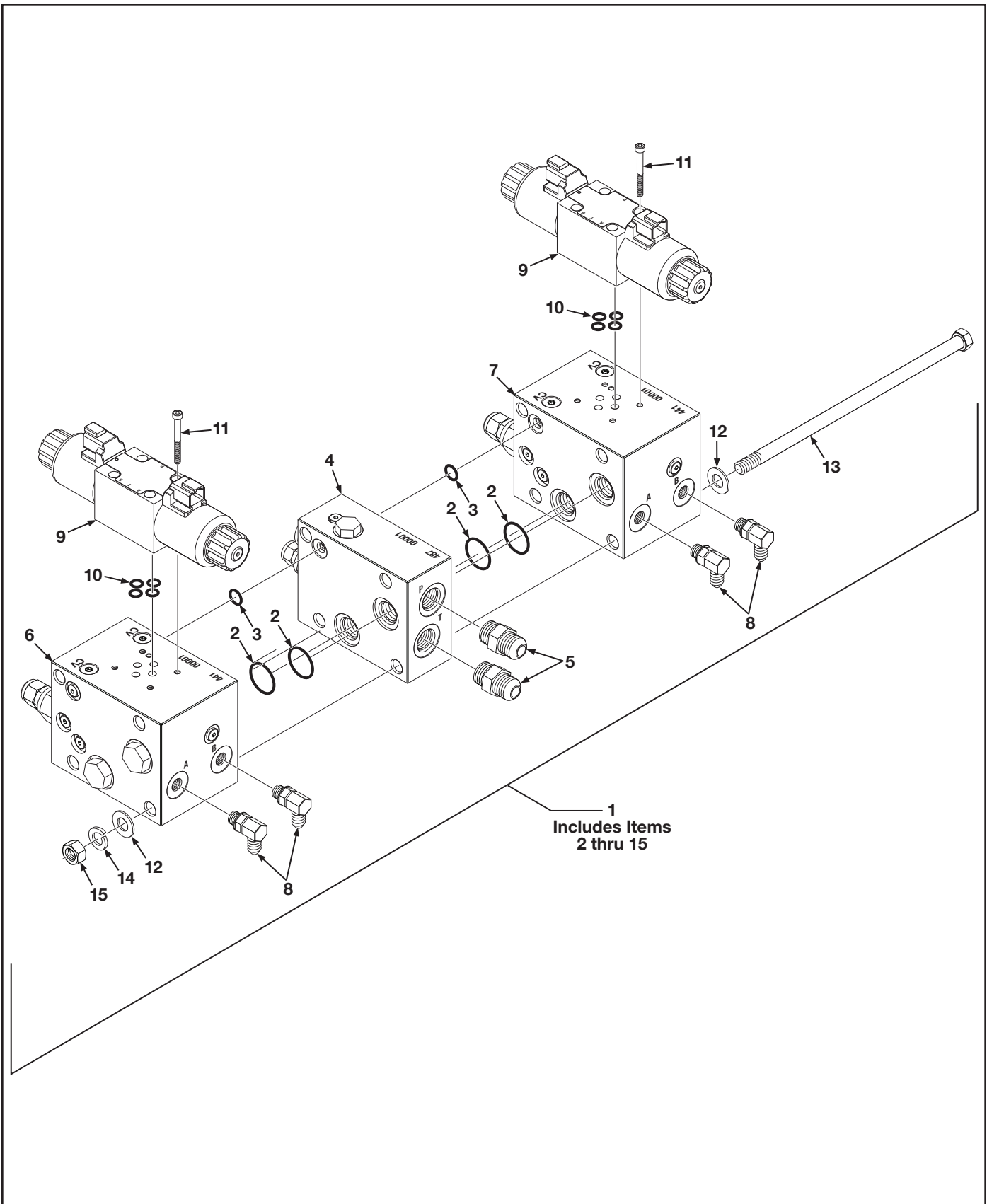
- BH-Bulkhead
- MP-Male Pipe
- FP-Female Pipe
- FPX-Female Pipe Swivel
- MB-Male O-Ring Boss
- FB-Female O-Ring Boss
- MJ-Male JIC
- FJ-Female JIC
- FJX-Female JIC Swivel

AR - As Required    NSS - Not Serviced Separately    ASN - After Serial No.    BSN - Before Serial No.    LP - Local Purchase

# Para-Level Grading Box PARTS LIST

Figure 6. Hydraulic Valve Assembly

ATI Corporation  
1-800-342-0905  
www.level-best.com



# Para-Level Grading Box PARTS LIST



**Figure 6. Hydraulic Valve Assembly**

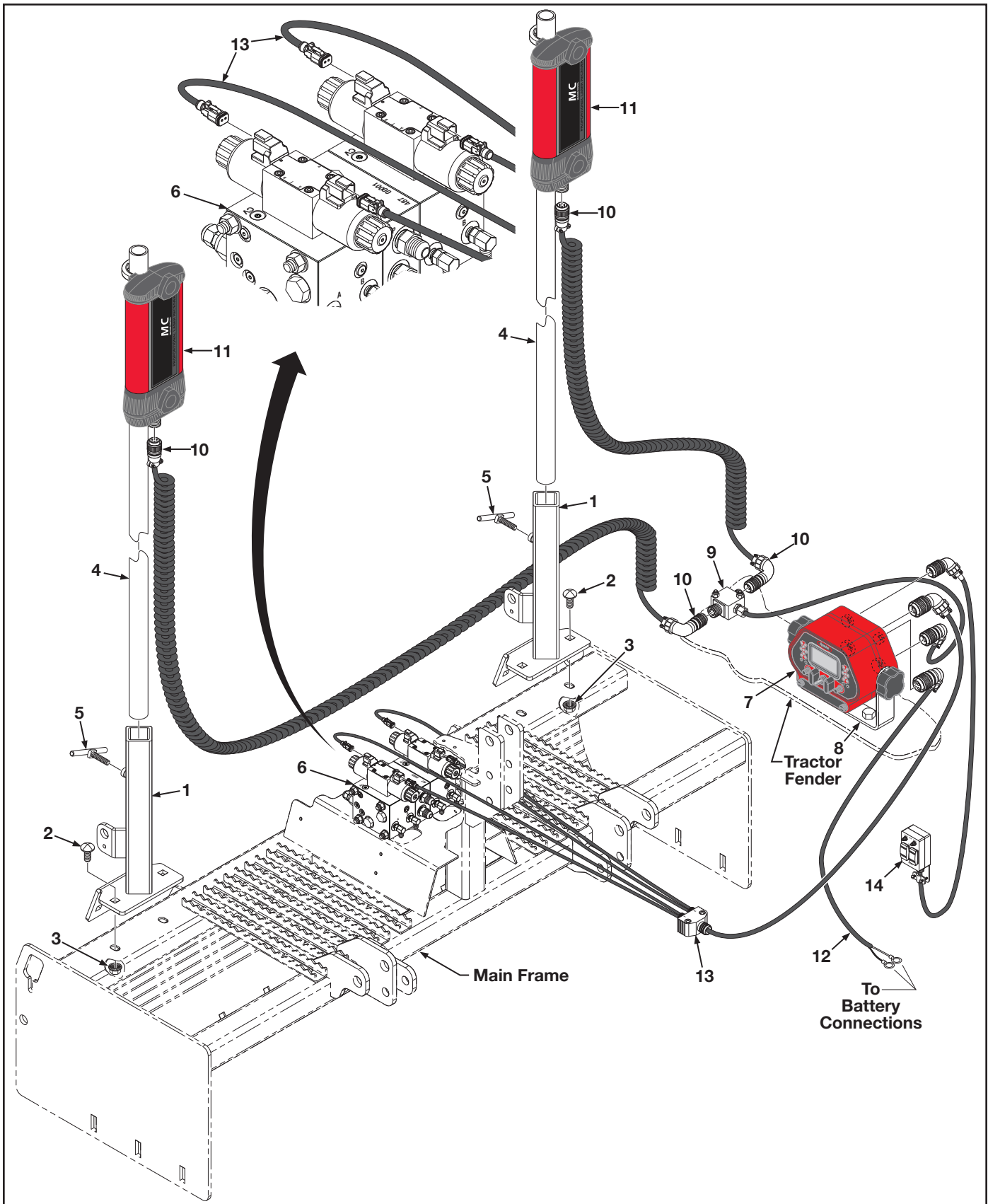
ATI Corporation  
 1-800-342-0905  
 www.level-best.com

Item	Part No.	Qty	Description
1	000-166-715	1	Valve Assembly, Hydraulic Double, Base, Includes Items 2 thru 15
2	000-166-516	4	O-Ring, Dash 120
3	000-166-515	2	O-Ring, Dash 112
4	000-166-499	1	Manifold Block, Primary, Includes Item 5
5	000-166-170	2	Adapter, Straight, 8MJ x 8MB
6	000-166-710	1	Manifold Block, Secondary, Includes Item 8 thru 11
7	000-166-711	1	Manifold Block, Secondary, Includes Item 8 thru 11
8	000-166-225	4	Elbow, 90°, 6MJ x 6MB
9	000-166-686	2	Valve, Directional, Includes Item 9 & 10
10	000-166-514	8	O-Ring, Buna-N, 012, 90 Duro, 1/2" OD x 3/8" ID
11	000-150-020	8	Screw, Socket Head, #10-24UNC x 1-3/4" Long
12	000-155-043	8	Washer, Flat, 7/16" SAE
13	000-150-176	4	Bolt, Hex Head, 7/16"-20UNC x 10" Long
14	000-155-044	4	Washer, Lock, 7/16"
15	000-158-101	4	Nut, Hex, 7/16"-20UNF

AR - As Required    NSS - Not Serviced Separately    ASN - After Serial No.    BSN - Before Serial No.    LP - Local Purchase

# Para-Level Grading Box PARTS LIST

Figure 7. Laser Controls and Related Parts -  
Apache CB52/Spectra CB30



# Para-Level Grading Box PARTS LIST



**Figure 7. Laser Controls and Related Parts -  
Apache CB52/Spectra CB30**

ATI Corporation  
1-800-342-0905  
www.level-best.com

Item	Part No.	Qty	Description
1	315-117-700	2	Mount, Mast
2	000-150-256	8	Bolt, Carriage, 5/8"-11UNC x 1-1/2" Long
3	000-158-142	8	Nut, Serrated, 5/8"-11UNC
4	001-001-052	2	Pole, Mast, 1-1/2" Dia x 7' Long
5	001-001-053	2	Handle, Tee
6	000-166-715	1	Valve Assembly, Hydraulic Double, See Breakdown <b>Figure 6</b>
7	000-200-176	1	Panel, Control, Apache CB52, Red, See Breakdown <b>Figure 8</b>
	000-200-213	1	Panel, Control, Spectra CB30, Yellow, See Breakdown <b>Figure 8</b>
8	001-001-075	1	Bracket, Control Panel
9	000-200-281	1	Cable, Dual Junction Block, Junction, 10' Long
10	000-200-187	2	Cable, Receiver, Coiled, 16' Long
11	000-200-093	2	Receiver, Laser 360°, Apache B5MC Red
	000-200-275	2	Receiver, Laser 360°, Spectra B5MC Yellow
12	000-200-097	1	Cable, Power, 4-Wire, 20' Long
13	000-200-329	1	Cable, Solenoid, Dual, 90° Connector, 16' Long
14	000-200-255	1	Switch Assembly, Remote, Auto/Manual, Raise/Lower, 10' Long

AR - As Required    NSS - Not Serviced Separately    ASN - After Serial No.    BSN - Before Serial No.    LP - Local Purchase



# Para-Level Grading Box PARTS LIST



**Figure 8. Control Panel, Laser Receiver 360°, Cables - Apache/Spectra**

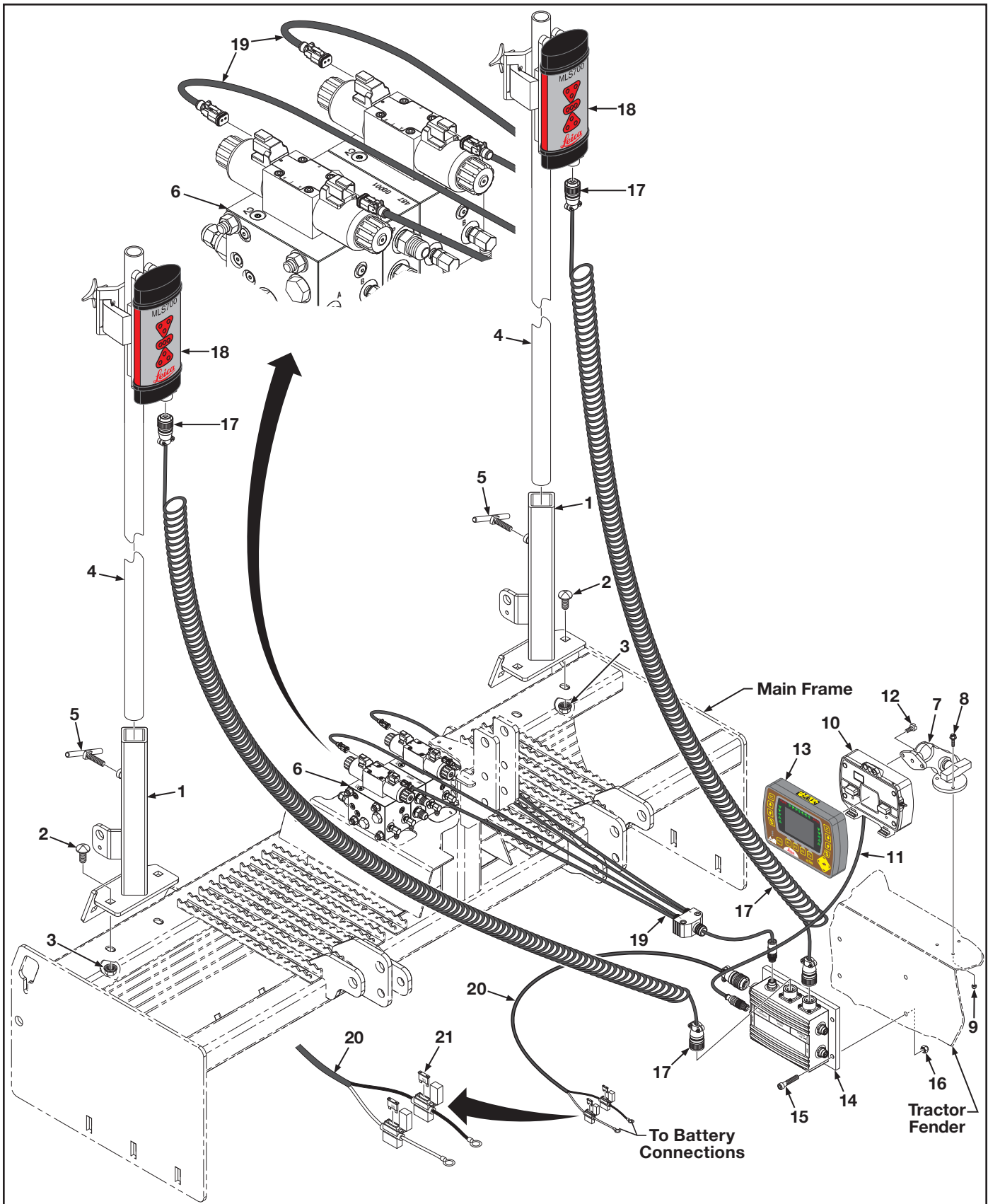
ATI Corporation  
 1-800-342-0905  
 www.level-best.com

Item	Part No.	Qty	Description
1	000-200-176	1	Panel, Control, Apache CB52, Red, Includes Items 2 thru 6
	000-200-213	1	Panel, Control, Spectra CB30, Yellow, Includes Items 2 thru 6
2	000-200-112	2	Knob
3	LP	1	Fuse, 25 Amp
4	000-200-115	1	Gasket, Front Cover Plate
5	000-200-114	1	Plate, Front Cover
6	000-200-113	2	Screw, Thumb
7	000-200-281	1	Cable, Dual Junction Block, Junction, 10' Long
8	000-200-187	2	Cable, Receiver, Coiled, 16' Long
9	000-200-097	1	Cable, Power, 4-Wire, 20' Long
10	000-200-329	1	Cable, Solenoid, Dual, 90° Connector, 16' Long
11	000-200-255	1	Switch Assembly, Remote, Auto/Manual, Raise/Lower, 10' Long
12	000-200-093	1	Receiver, Laser 360°, Apache B5MC Red, Includes Items 11 thru 13
	000-200-275	1	Receiver, Laser 360°, Spectra B5MC Yellow, Includes Items 11 thru 13
13	000-161-094	2	Spring, Clamp, Compression
14	000-200-108	2	Clamp, Universal, 2" Dia.
15	000-200-107	2	Knob, Clamp

AR - As Required    NSS - Not Serviced Separately    ASN - After Serial No.    BSN - Before Serial No.    LP - Local Purchase

# Para-Level Grading Box PARTS LIST

Figure 9. Laser Controls and Related Parts -  
Leica iCON System





# Para-Level Grading Box PARTS LIST



**Figure 9. Laser Controls and Related Parts -  
Leica iCON System**

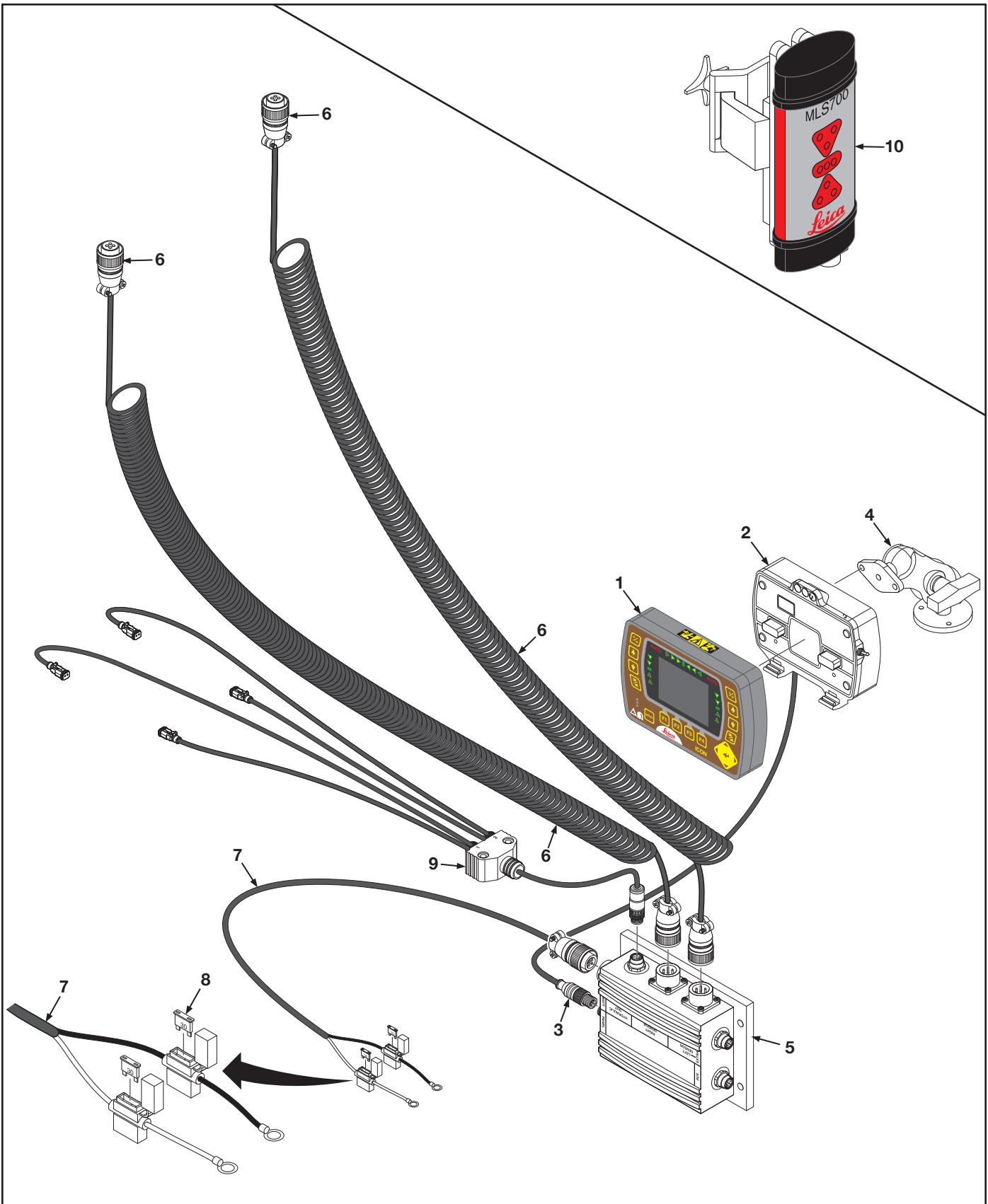
ATI Corporation  
1-800-342-0905  
www.level-best.com

Item	Part No.	Qty	Description
1	315-117-700	2	Mount, Mast
2	000-150-256	8	Bolt, Carriage, 5/8"-11UNC x 1-1/2" Long
3	000-158-142	8	Nut, Serrated, 5/8"-11UNC
4	001-001-052	2	Pole, Mast, 1-1/2" Dia x 7' Long
5	001-001-053	2	Handle, Tee
6	000-166-715	1	Valve Assembly, Hydraulic Double, See Breakdown <a href="#">Figure 6</a>
7	000-200-261	1	Ram Ball
8	000-150-015	3	Bolt, Hex Head, SS, #10-24UNC x 3/4" Long
9	000-158-041	3	Nut, Hex Nylon Lock, SS, #10-24UNC
10	000-200-260	1	Cradle, Control Panel
11	000-200-262	1	Cable, Junction Box, Cradle
12	000-150-006	2	Screw, Slot Head
13	000-200-426	1	Control Panel, Leica iCON, See Breakdown <a href="#">Figure 10</a>
14	000-200-263	1	Box, Junction
15	000-150-048	4	Bolt, Hex Head, SS, 1/4"-20UNC x 3/4" Long
16	000-158-050	4	Nut, Hex, Nylon Lock, SS, 1/4"-20UNC
17	000-200-463	2	Cable, Receiver/Sonic, Coiled, 1.5-6mm; Leica iCON
18	000-200-464	2	Receiver, Laser 360°
19	000-200-330	1	Cable, Solenoid, Dual, 16' L, Leica iCON
20	000-200-265	1	Cable, Power, 2-Wire, 20' Long, Includes Items 21
21	LP	2	Fuse, 30 Amp

AR - As Required    NSS - Not Serviced Separately    ASN - After Serial No.    BSN - Before Serial No.    LP - Local Purchase

# Para-Level Grading Box PARTS LIST

Figure 10. Control Panel, Laser Receiver 360°, Cables -  
Leica iCON System



# Para-Level Grading Box PARTS LIST

**Figure 10. Control Panel, Laser Receiver 360°, Cables -  
Leica iCON System**



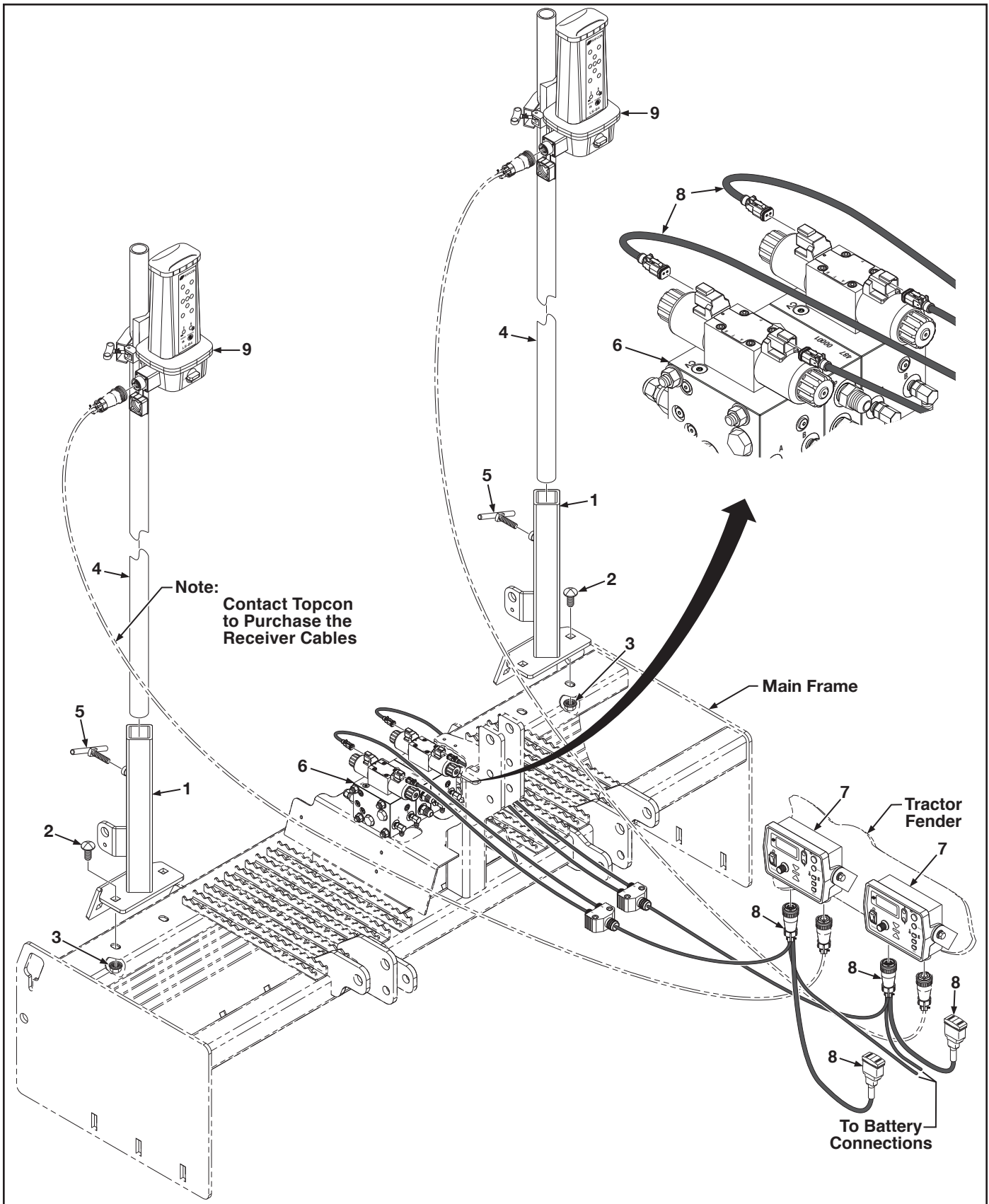
ATI Corporation  
1-800-342-0905  
www.level-best.com

Item	Part No.	Qty	Description
1	000-200-426	1	Control Panel, Leica iCON
2	000-200-260	1	Cradle, Control Panel
3	000-200-262	1	Cable, Junction Box, Cradle
4	000-200-261	1	Ram Ball
5	000-200-263	1	Box, Junction
6	000-200-463	2	Cable, Receiver/Sonic, Coiled, 1.5-6mm; Leica ICON
7	000-200-265	1	Cable, Power, 2-Wire, 20' Long, Includes Items 8
8	LP	2	Fuse, 30 Amp
9	000-200-330	1	Cable, Solenoid, Dual, 16' L, Leica iCON
10	000-200-464	2	Receiver, Laser 360°

AR - As Required    NSS - Not Serviced Separately    ASN - After Serial No.    BSN - Before Serial No.    LP - Local Purchase

# Para-Level Grading Box PARTS LIST

Figure 11. Laser Controls and Related Parts - Topcon System Five Remote & LS-B4



# Para-Level Grading Box PARTS LIST



**Figure 11. Laser Controls and Related Parts - Topcon System Five Remote & LS-B4**

ATI Corporation  
 1-800-342-0905  
 www.level-best.com

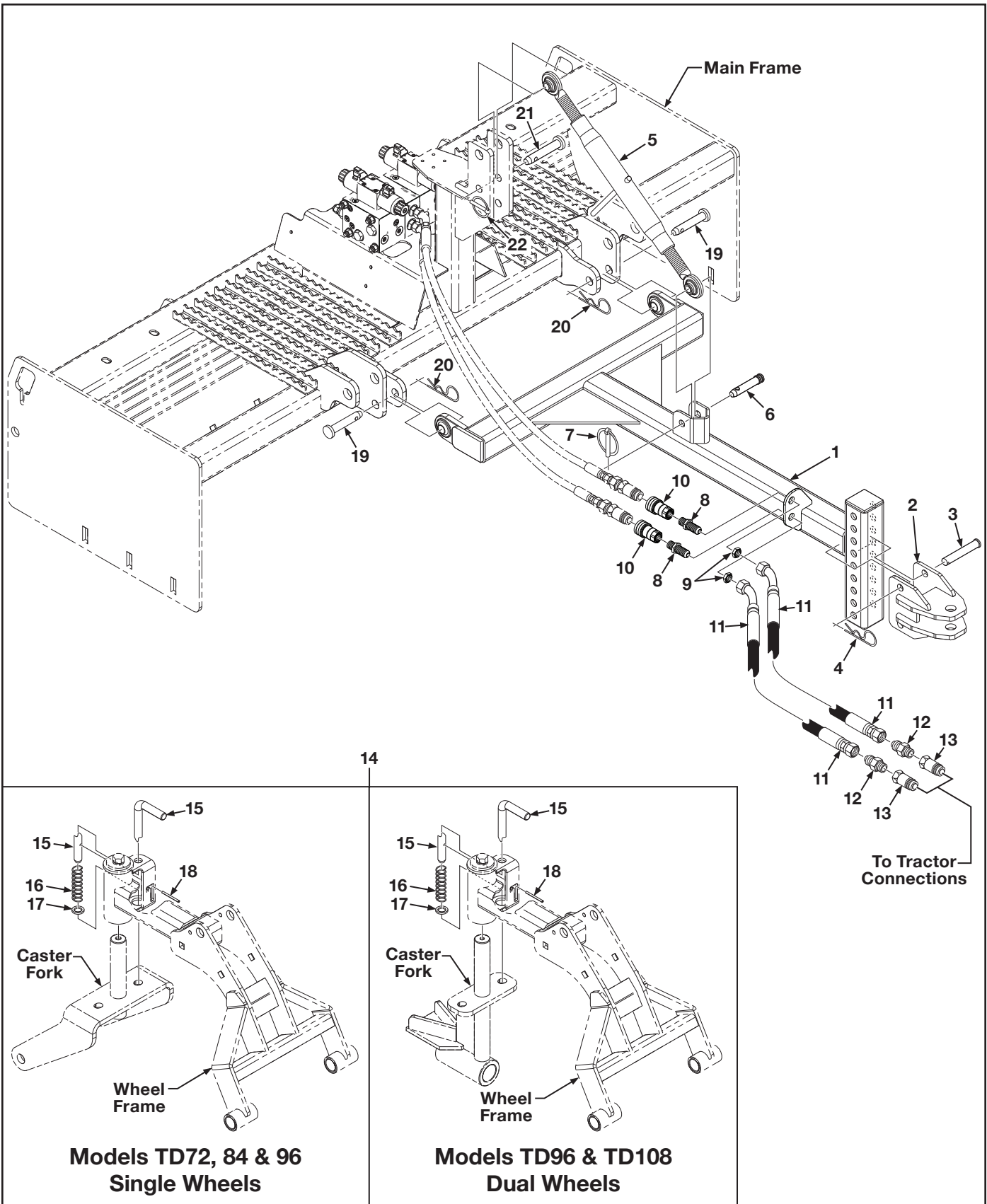
Item	Part No.	Qty	Description
1	315-117-700	2	Mount, Mast
2	000-150-256	8	Bolt, Carriage, 5/8"-11UNC x 1-1/2" Long
3	000-158-142	8	Nut, Serrated, 5/8"-11UNC
4	001-001-052	2	Pole, Mast, 1-1/2" Dia x 7' Long
5	001-001-053	2	Handle, Tee
6	000-166-715	1	Valve Assembly, Hydraulic Double, See Breakdown <a href="#">Figure 6</a>
7	000-200-069	2	Panel, Control, System Five
8	000-200-356	2	Harness, Dual, Topcon System 5, 16' Long
9	000-200-070	2	Receiver, Laser 360°, LS-B4

AR - As Required    NSS - Not Serviced Separately    ASN - After Serial No.    BSN - Before Serial No.    LP - Local Purchase

# Para-Level Grading Box PARTS LIST

Figure 12. Drawbar Kit, with Wheel Locks (Optional)

ATI Corporation  
1-800-342-0905  
www.level-best.com



# Para-Level Grading Box PARTS LIST



Figure 12. Drawbar Kit, with Wheel Locks (Optional)

ATI Corporation  
 1-800-342-0905  
 www.level-best.com

Item	Part No.	Qty	Description
	315-547-000	1	Kit, Drawbar, Category I, Includes Items 1 thru 18
1	315-541-000	1	Drawbar, Category I
2	315-542-000	1	Hitch, Clevis
3	000-161-079	2	Pin, Clevis, 3/4" Dia. x 4-1/2" Long
4	000-161-071	2	Pin, Cotter, Hair, .148" Dia. x 2-11/16" Long
5	001-001-064	1	Top Link
6	000-161-080	1	Pin, Top Link, 3/4" Dia. x 4-1/2" Long
7	000-161-028	1	Pin, Lynch, Locking, 7/16"
8	000-166-447	2	Connector, Bulkhead, 8MP x 8BH, Includes Item 9
9	NSS	2	Nut, Hex, Jam Lock
10	000-166-218	2	Coupler, Quick Disconnect, Ag, Female, 1/2" x 1/2" NPT
11	000-166-616	2	Hose, 1/2" Dia. x 58" Long x 8FJX x 8FJX45, 3,000 PSI
12	000-166-168	2	Adapter, Straight, 8MJ x 8MP
13	000-166-210	2	Coupler, Quick Disconnect, Ag, Male, 1/4"
14	315-645-000	2	Kit, Wheel Lock, Caster Lock, Includes Items 15 thru 18
15	000-161-136	1	Pin, Lock, Caster Fork, 3/4" Dia. x 7" Long
16	000-161-133	1	Spring, Compression
17	000-155-096	1	Washer, Flat, 3/4" Narrow
18	000-161-119	1	Pin, Roll, 3/16" Dia. x 2-1/4" Long
19	000-161-076	2	Pin, Hitch, 7/8" Dia. x 5-1/4" Long, Category I
20	000-161-019	2	Pin, Hair, Cotter, 3/16" Dia. x 3-3/4" Long
21	000-161-081	1	Pin, Top Link, 3/4" Dia. x 5-1/2" Long, Category I
22	000-161-028	1	Pin, Lynch, Locking, 7/16"

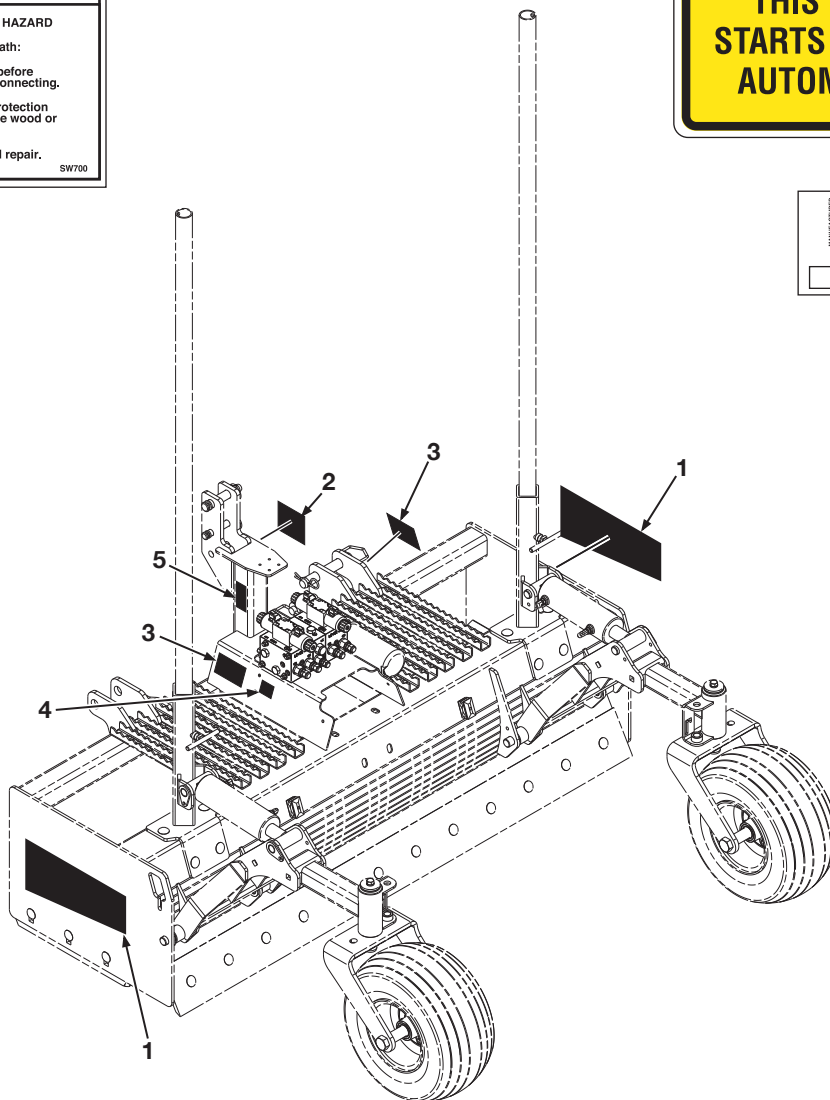
- BH-Bulkhead
- MP-Male Pipe
- FP-Female Pipe
- FPX-Female Pipe Swivel
- MB-Male O-Ring Boss
- FB-Female O-Ring Boss
- MJ-Male JIC
- FJ-Female JIC
- FJX-Female JIC Swivel

AR - As Required    NSS - Not Serviced Separately    ASN - After Serial No.    BSN - Before Serial No.    LP - Local Purchase

Figure 13. Decals

ATI Corporation  
1-800-342-0905  
www.level-best.com

**Level Best**<sup>®</sup>  
PRECISION GRADING





# Para-Level Grading Box PARTS LIST

Figure 13. Decals



ATI Corporation  
 1-800-342-0905  
 www.level-best.com

Item	Part No.	Qty	Description
1	000-186-045	2	Decal, Level Best Logo
2	000-186-041	1	Decal, Warning, High Pressure
3	000-186-094	2	Decal, Warning, This Machine Starts & Stops Automatically
4	000-186-092	1	Decal, Made in U.S.A.
5	000-186-035	1	Plate, Model/Serial, Adhesive Back

AR - As Required    NSS - Not Serviced Separately    ASN - After Serial No.    BSN - Before Serial No.    LP - Local Purchase